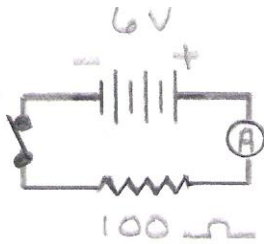


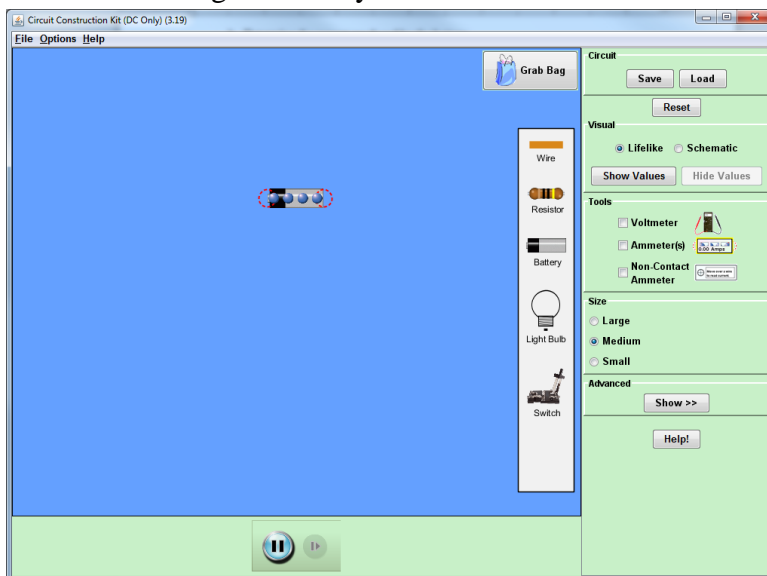
Circuit construction instructions

This simulation allows you build a circuit by dragging components with your mouse and placing them together on the screen.

The first circuit we need to build is:



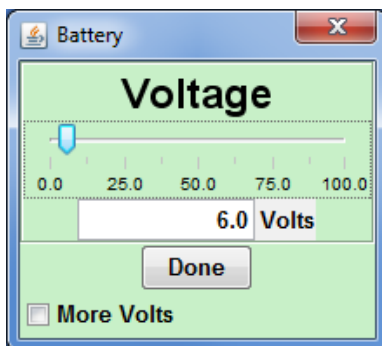
First we can drag the battery into the blue screen



The diagram calls for 6 V.

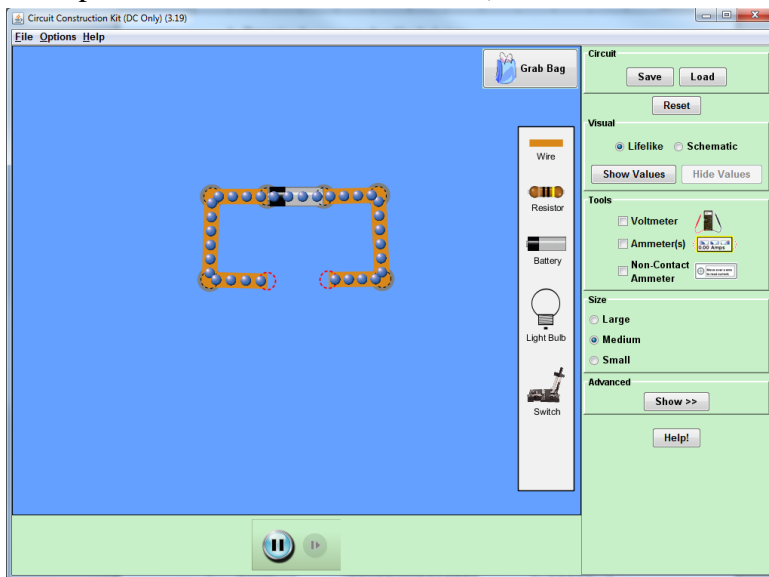
Right click on the battery and select change voltage.

Type in 6

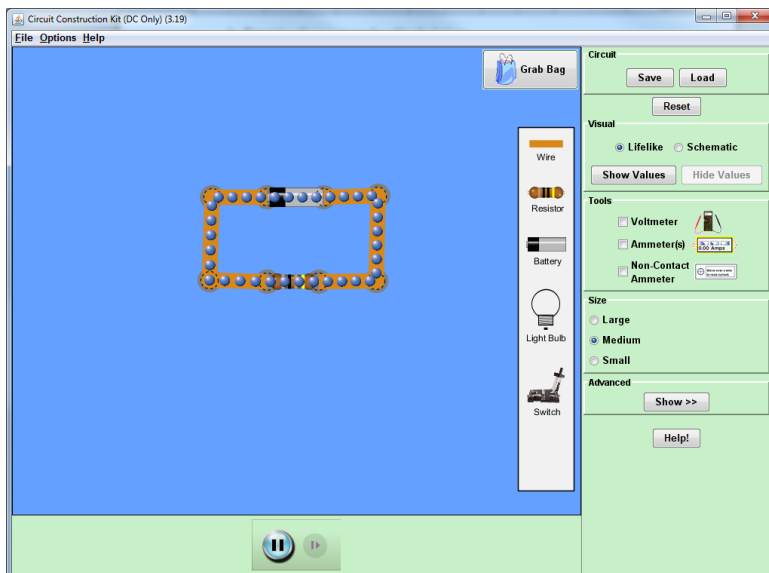


Click Done

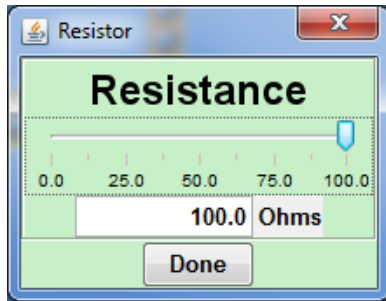
Now drag in wires on either side of the battery. (A closed switch is just like a plain wire, so just use a plain wire instead of the switch.)



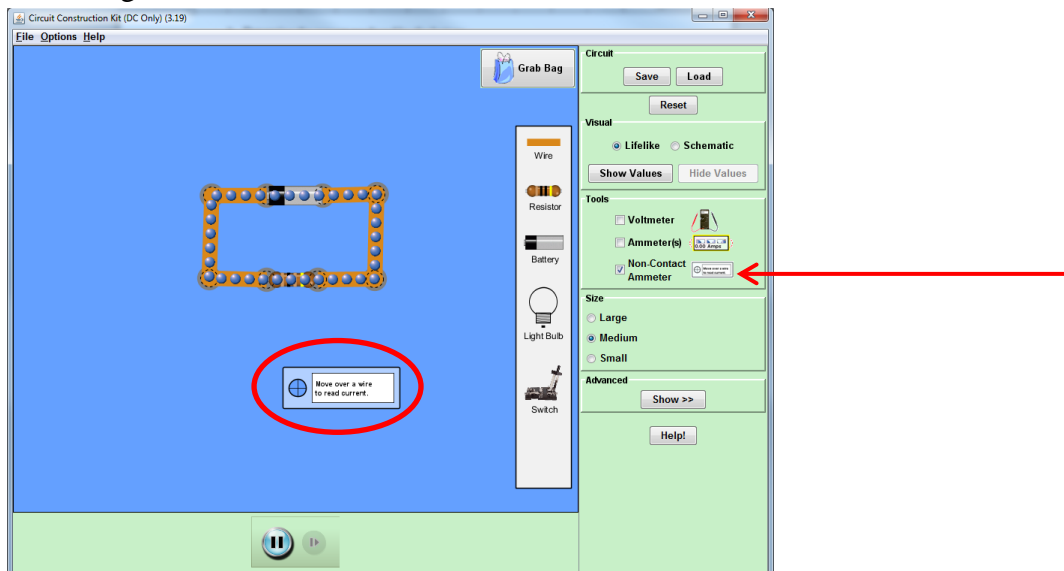
Add in the resistor



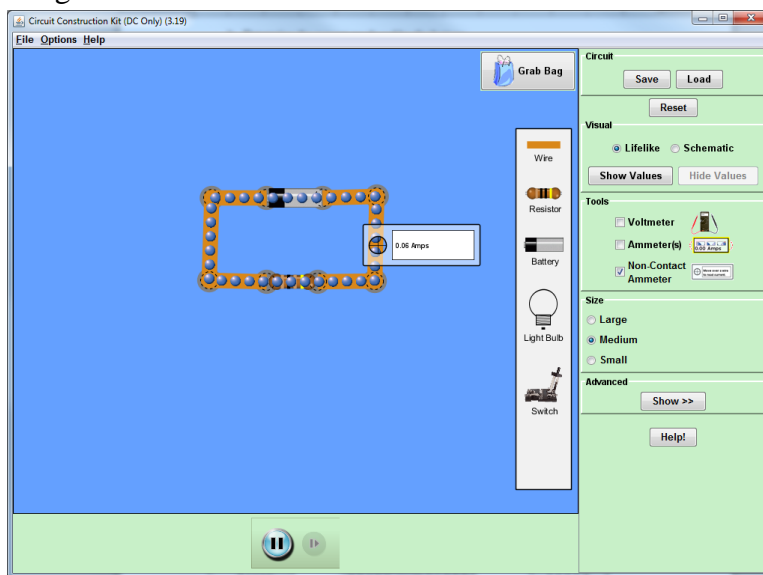
Right click on the resistor to change the resistance to 100 Ω



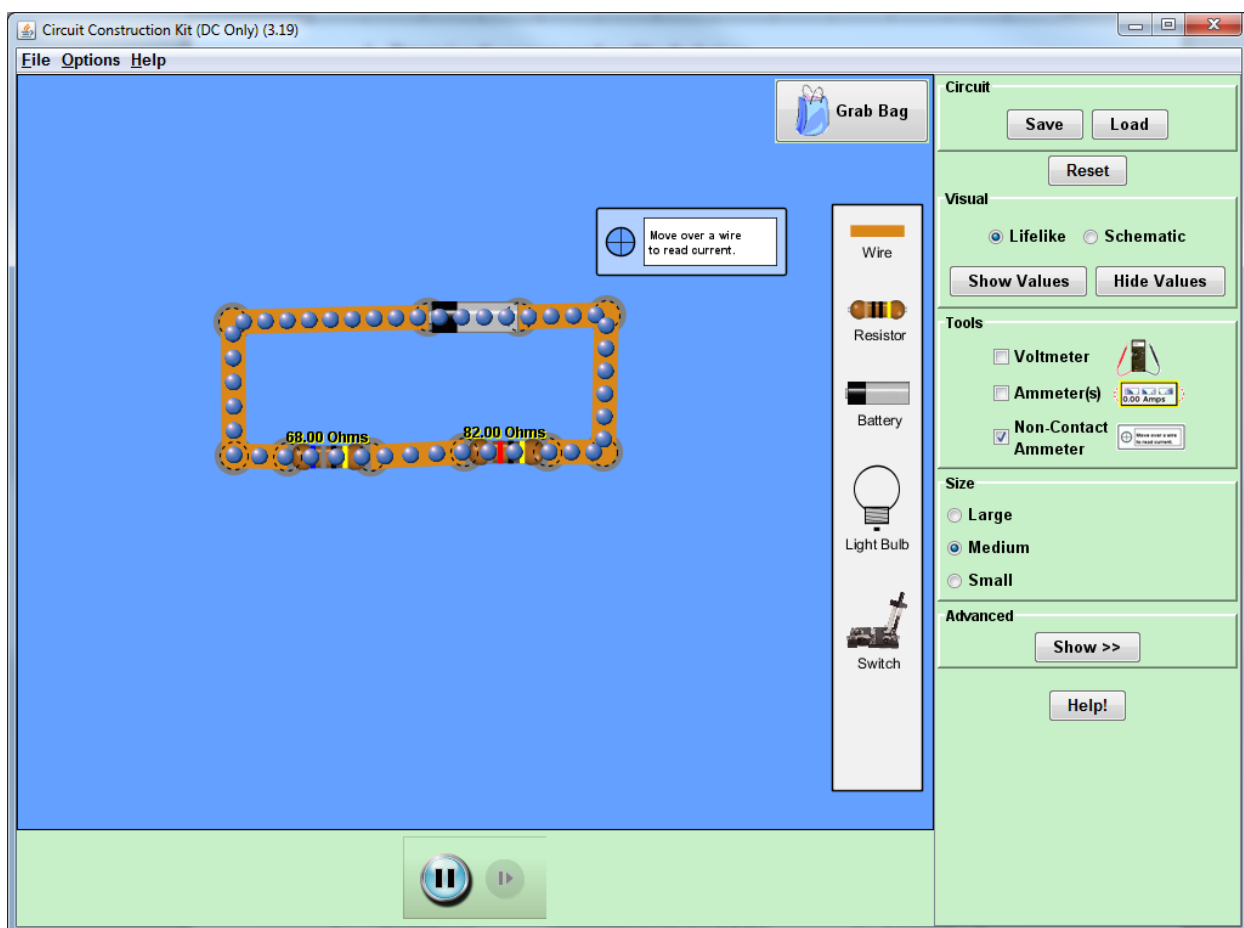
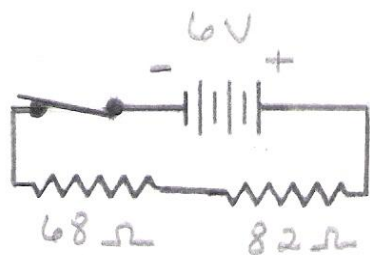
On the right hand side of the screen, select “non-contact ammeter”

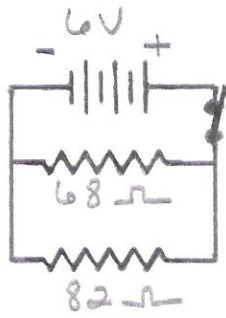


Drag the ammeter on to a section of wire to read the current



Follow similar steps to build the other two circuits





Circuit Construction Kit (DC Only) (3.19)

File Options Help

Grab Bag

Move over a wire to read current.

68.00 Ohms

82.00 Ohms

Wire

Resistor

Battery

Light Bulb

Switch

Circuit

Save Load

Reset

Visual

Lifelike Schematic

Show Values Hide Values

Tools

Voltmeter

Ammeter(s) 0.00 Amperes

Non-Contact Ammeter

Size

Large

Medium

Small

Advanced

Show >>

Help!

⏸ ⏩